

## Digital Three Phase Line Voltage Monitor

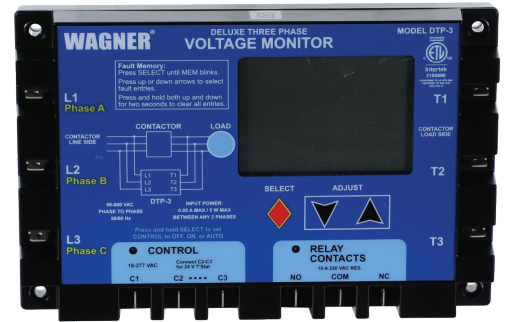
### PRODUCT DTP-3

### PURPOSE

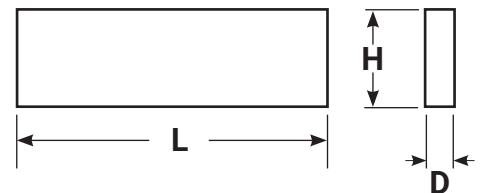
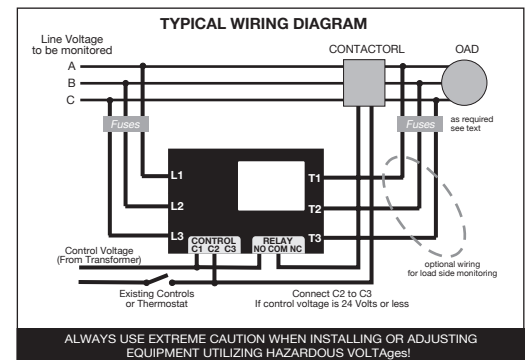
The DiversiTech Digital Three Phase Line Voltage Monitor offers continuous protection against voltage anomalies which can damage compressors, motors and other sensitive electrically operated devices.

### FEATURES

- **PROTECTION:** Loss of Phase, Phase Reversal, Voltage Imbalance, Low Voltage, High Voltage
- **DISPLAY:** Large custom LCD display indicates all operating conditions at a glance. Three large sets of digits provide easy system troubleshooting.
- **VOLTMETER:** Three independent voltmeters read both line and contactor load (backside) voltages.
- **MONITORED VOLTAGE:** 160 to 600 Volts 50-60 Hz.
- **POWER SUPPLY:** Power for the WPC-500 is automatically derived from any active phase. System is not dependent on the control voltage or a specific phase for power.
- **CONTROL VOLTAGE:** 19-277 VAC. Anticipator load is provided for operation with 24 volt electronic and mechanical thermostats.
- **OPERATING VOLTAGE SET POINT:** 175 to 650 VAC. Digitally adjustable in one volt increments.
- **VOLTAGE TRIP POINT:** Adjustable in 1% increments between 6% and 18% of selected operating voltage. Restart voltage set point (hysteresis) fixed at cutout voltage + 3%.
- **VOLTAGE SYMMETRY:** Adjustable imbalance trip point from 2% to 25% of selected operating voltage.
- **RESPONSE TIMES:** Phase Loss/Reversal: 100 mS max.
- **LOCKOUT DELAY TIMER:** Fully adjustable 0 to 720 Seconds (0 to 12 minutes). Digital display shows remaining time and user set points.
- **SEQUENTIAL START TIMER:** 0 to 30 seconds in one second increments.
- **RESPONSE TIMER:** 0.1 to 20 Seconds. Digital display shows remaining time and user set points.



DTP-3



## Digital Three Phase Line Voltage Monitor (cont.)

### FEATURES cont.

- MEMORY: Up to 50 past fault conditions are stored for later retrieval and analysis. The faults may be displayed or cleared by the front panel buttons.

### GENERAL SPECIFICATIONS

- Warranty - 1 year
- Accuracy - + / - 2% of indicated average voltage

### FACTORY SETTINGS

- 208 volts
- 6% imbalance
- 12% tolerance
- 30 second DOB lockout
- 2 second response
- 0 second delay
- Control: auto
- Contactor test: off

### GENERAL CHARACTERISTICS

MODEL	VOLTMETER	NUMBER OF PHASE PAIRS	DIMENSIONS	WEIGHT
DTP-3	70 Volts - 650 Volts	3	L = 6.50 in., D = 0.98 in., H = 4.25 in.	0.91 lbs.

# EPROTECA

[www.eproteca.com](http://www.eproteca.com)

 +506 8880 1686